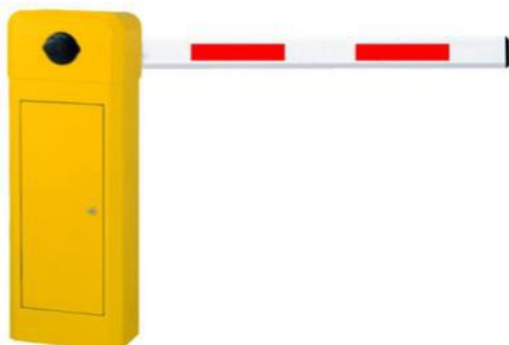




**MODEL: WSTP-115 - BY WONSUN.**

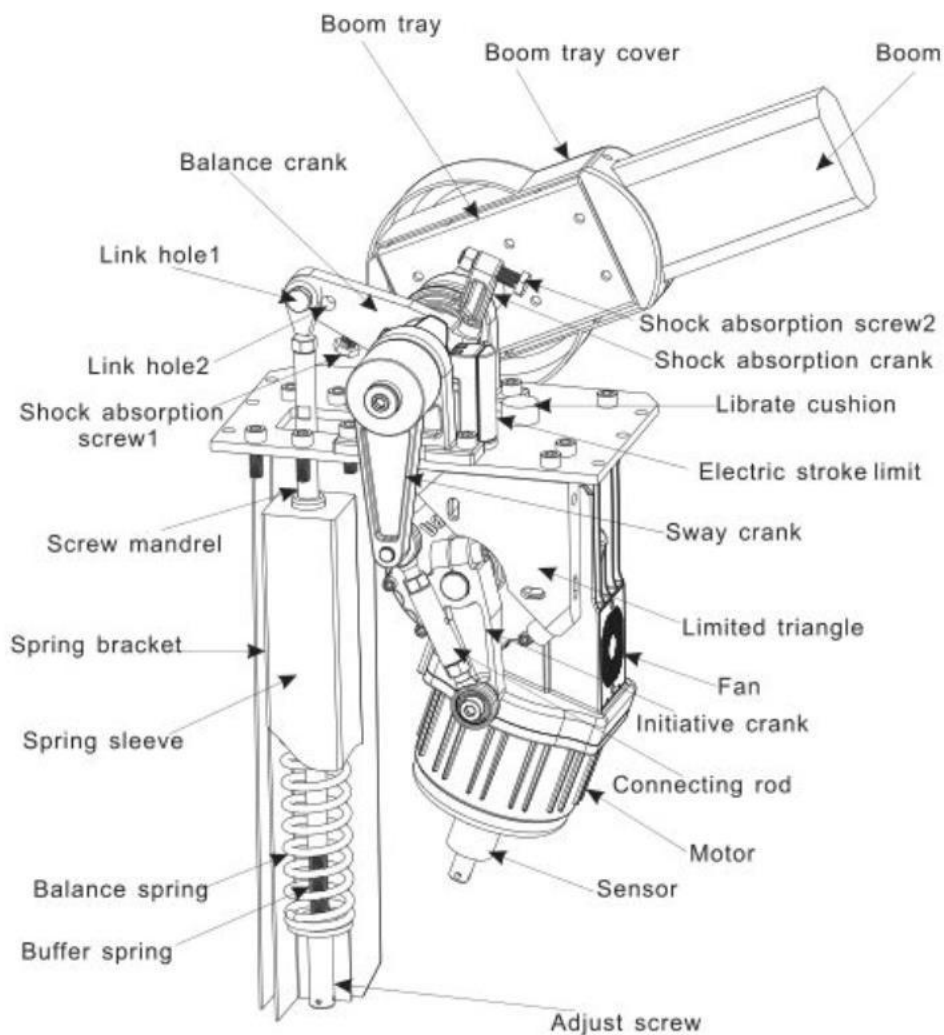


<b>POWER SUPPLY</b>	230V / 50 HZ OR 110V
<b>ELECRTC MOTOR</b>	SINGLE PHASE BI-DIRECTIONAL
<b>ABSORBED POWER</b>	220W
<b>ABSORBED CURRENT</b>	1 A
<b>THERMAL PROTECTION ON MOTOR WINDING</b>	120 °
<b>OPERATING TEMPERATURE</b>	-20 TO +55 °.
<b>BODY TREATMENT</b>	CATAPHORESIS
<b>COLOUR</b>	POLYESTER RAL COLOUR
<b>PROTETION CLASS</b>	IP 54
<b>DIMENSIONS</b>	320 X 280 X 935 MM
<b>MATERIAL THICKNESS</b>	BLUE / GREY / ORANGE
<b>OPENING /CLOSING TIME</b>	0.6 SECS FOR BOOM UPTO 2.5 MTRS. 1 SECS FOR BOOM UPTO 3 MTRS 3 SECS FOR BOOM UPTO 4.5 MTR. 6 SECS. FOR 6 MTR.
<b>BOOM PROFILE</b>	ALUMINIUM HOLLOW PROFILE RETRACTABLE TYPE FOR 6 MTRS. [SPLIT TYPE]  NORMAL STRAIGHT BOOM FOR 6 MTS

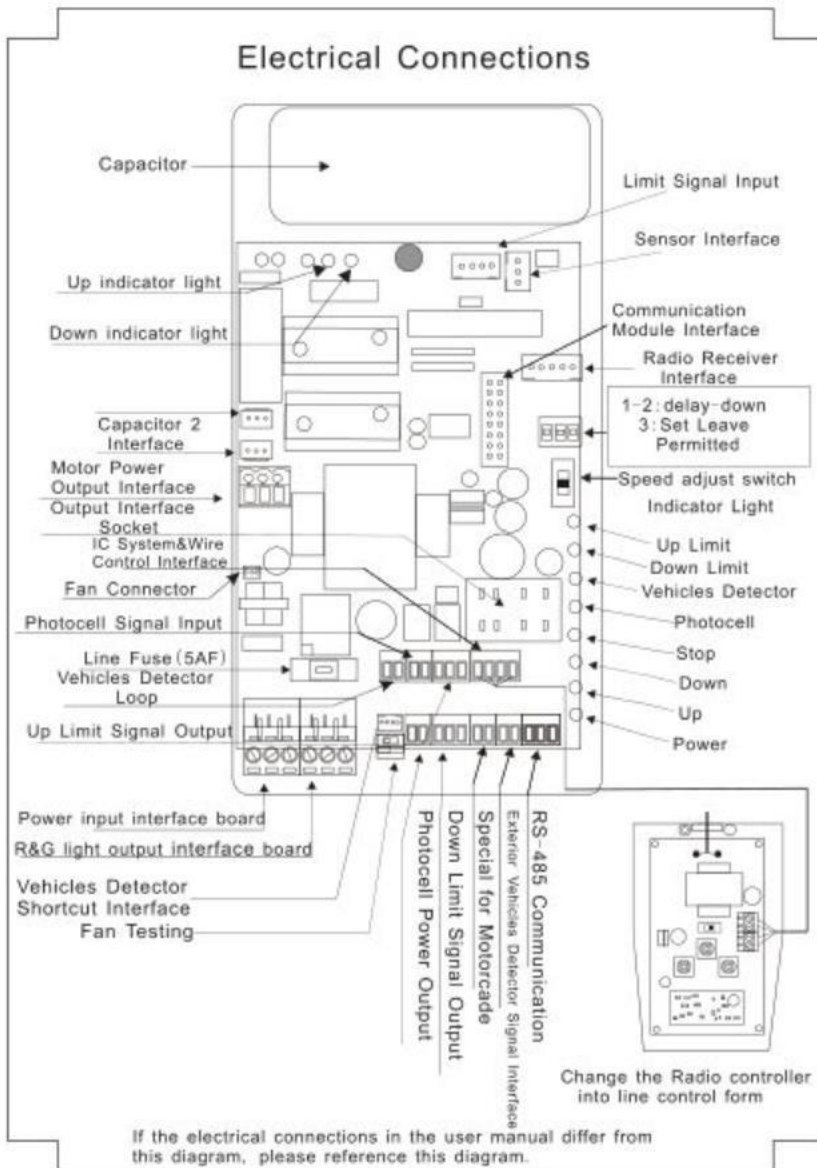
ADDITIONAL FEATURES:

1. Special designed machine core with heavy duty compression spring.
2. Manual release in case of power failure.
3. Die-casting aluminium alloy motor.
4. Motor cooling fan for heat protection.
5. Double safety limit switches.
6. Electronic deceleration, patented.
7. Torque motor, steady, low noise.
8. Silent, heavy duty ,steady and durable

MACHINE CORE:



CONNECTIONS OF ELETRIC PARTS:



OPTIONAL ACCESSORIES SUPPORT:

1. PHOTOCELLS.
2. FLASHING LIGHT.
3. REMOTE.
4. LOOP DETECTOR.
5. RS 485 INTERFACE.
6. REST POST